

# DAS MIT DEN NAMEN DER TÖNE

c'

d'

e'

f'

g'

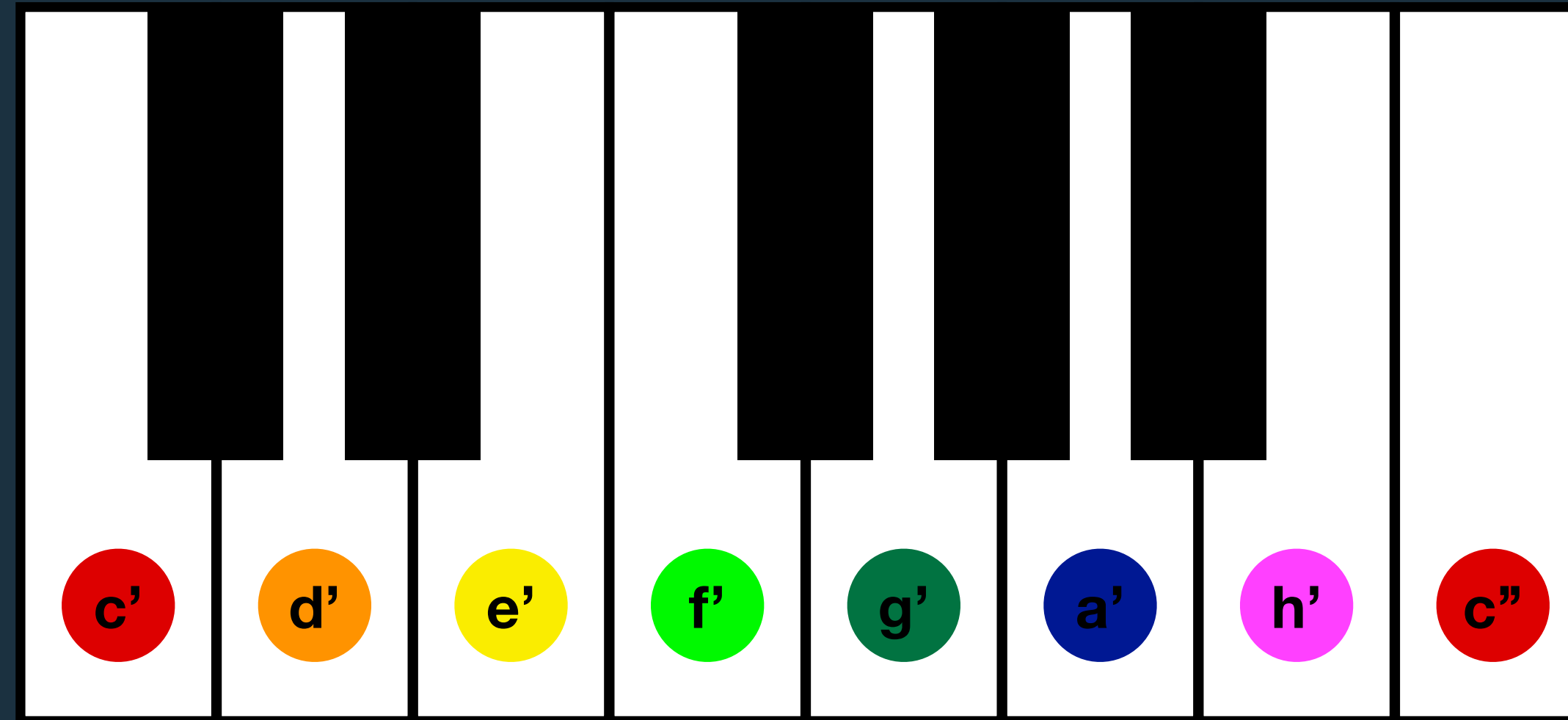
a'

h'

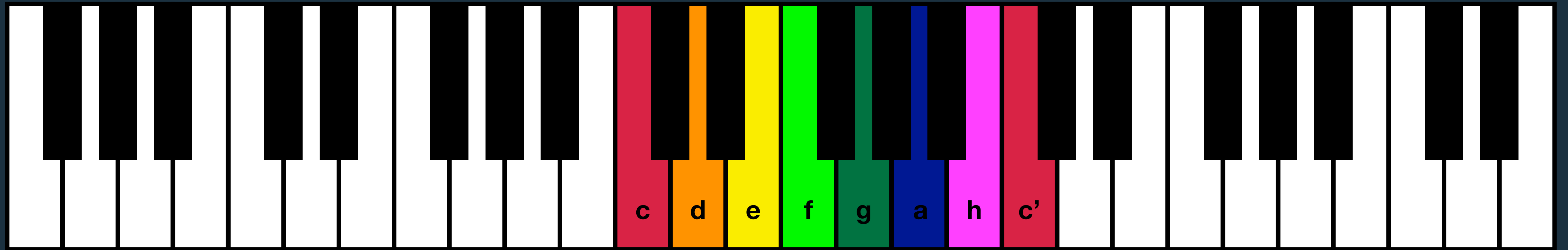
c''



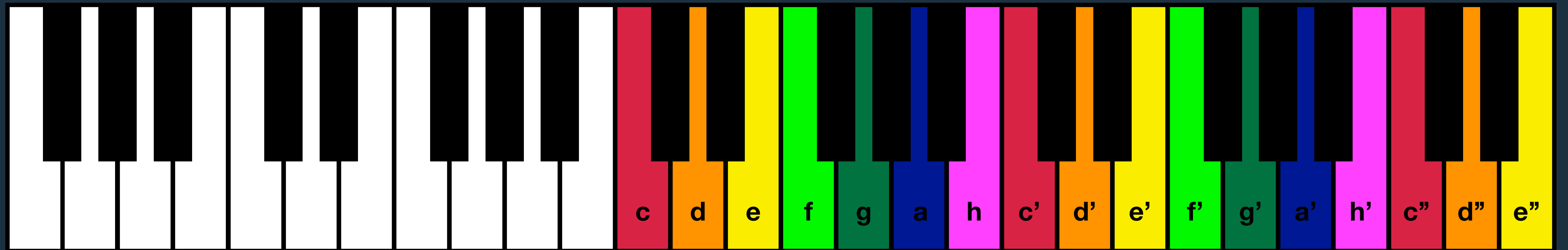
# DAS MIT DEN NAMEN DER TÖNE



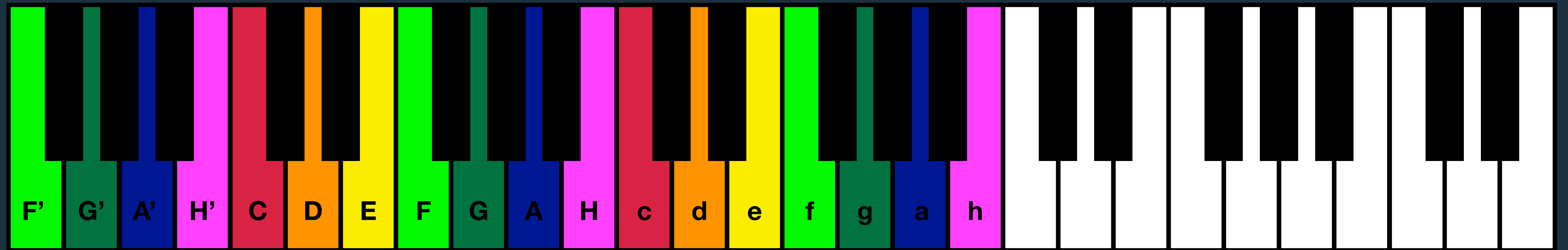
# DAS MIT DEN NAMEN DER TÖNE



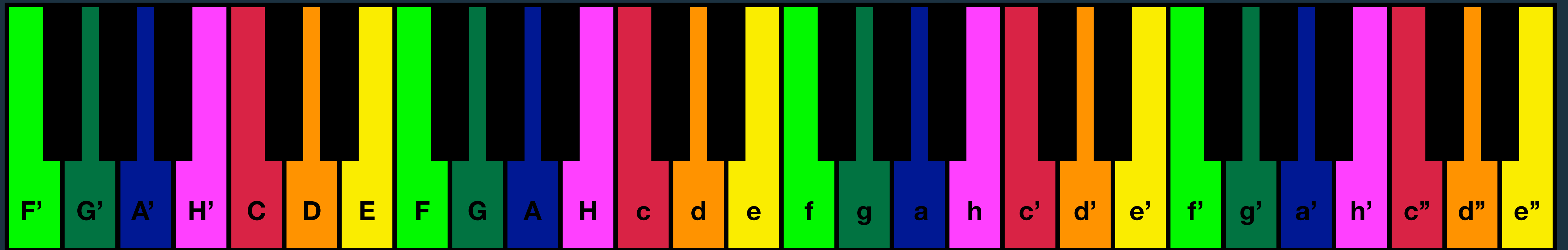
# DAS MIT DEN NAMEN DER TÖNE



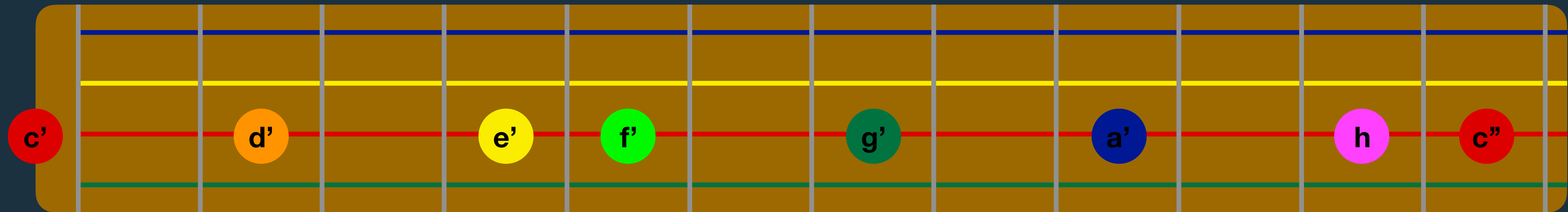
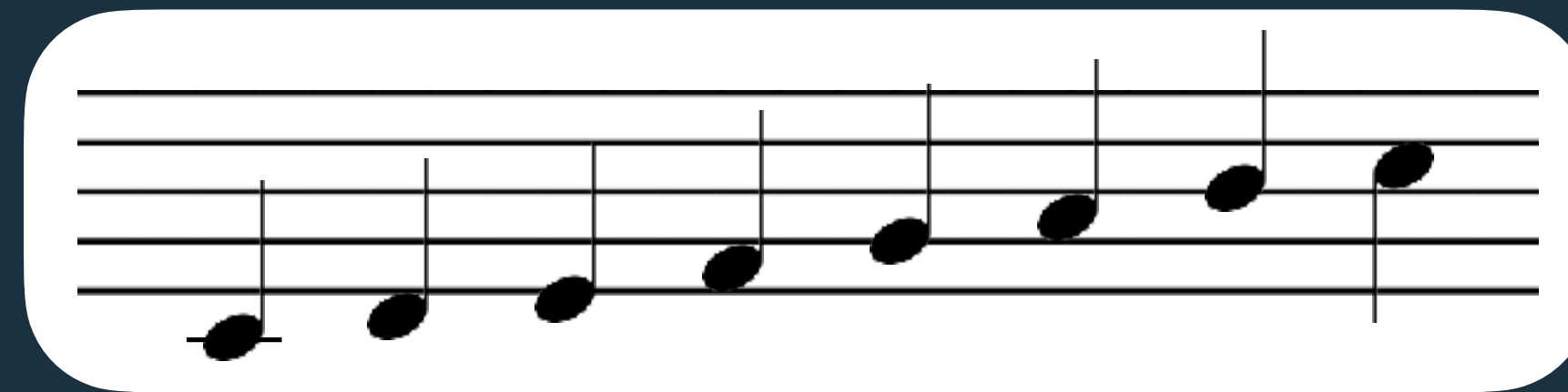
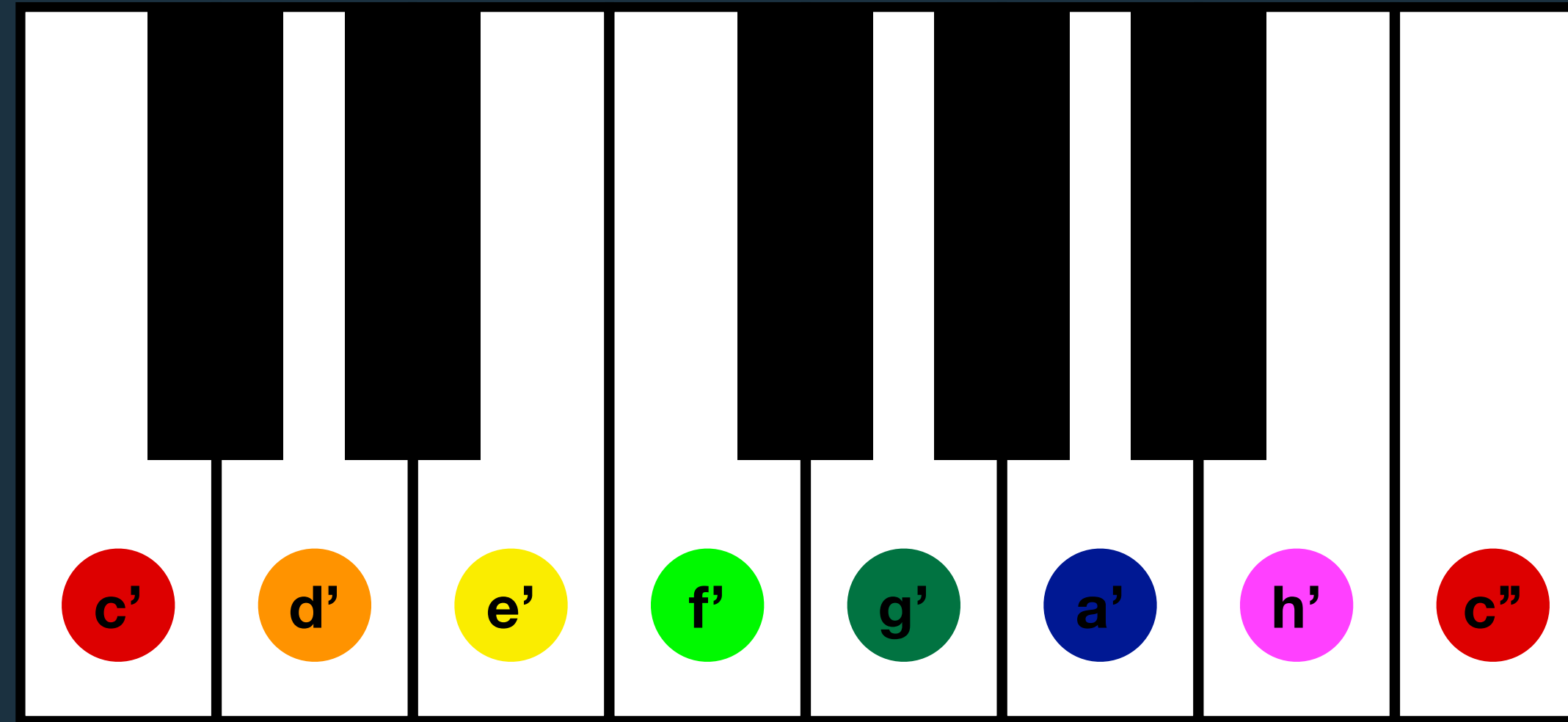
# DAS MIT DEN NAMEN DER TÖNE



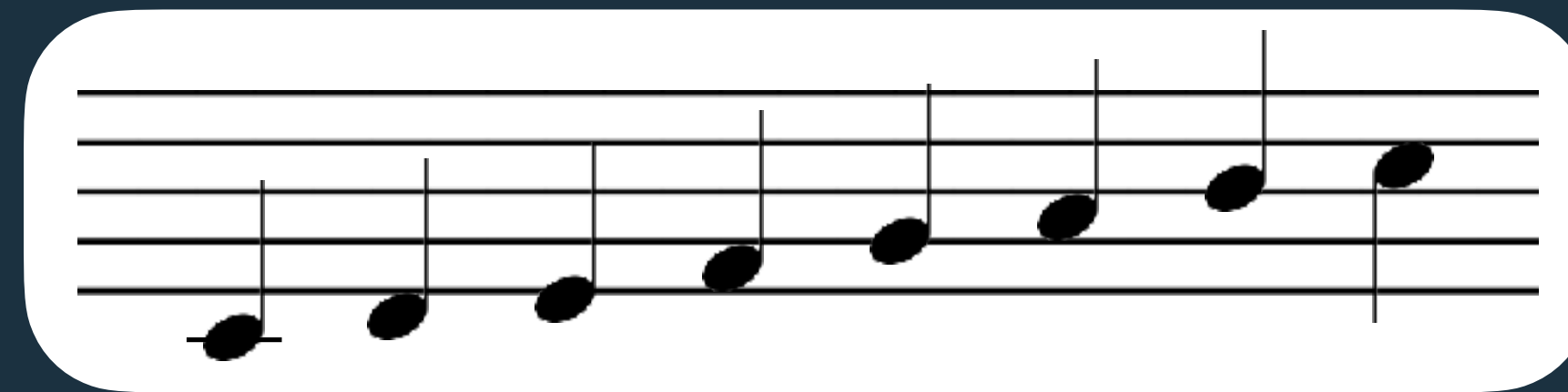
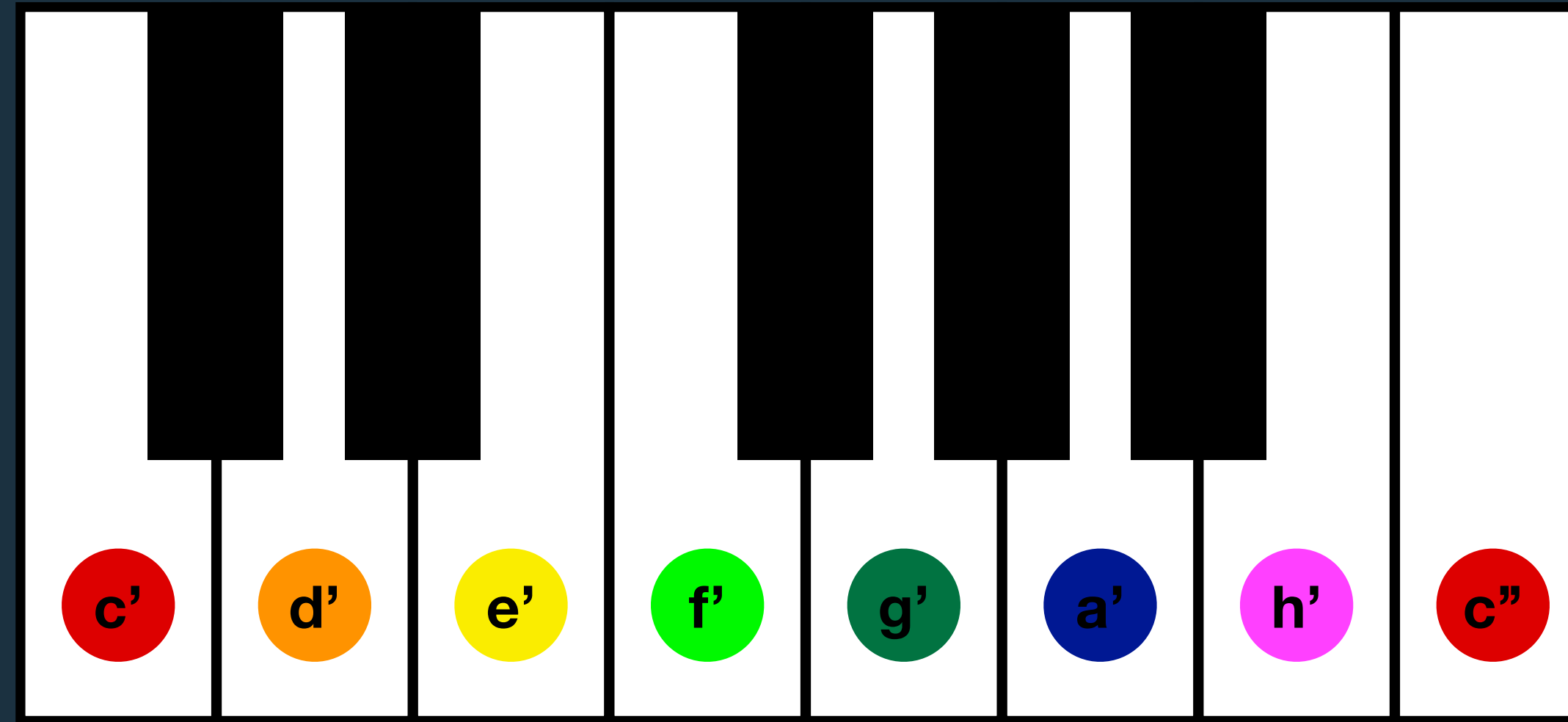
# DAS MIT DEN NAMEN DER TÖNE



# DAS MIT DEN NAMEN DER TÖNE



# DAS MIT DEN NAMEN DER TÖNE

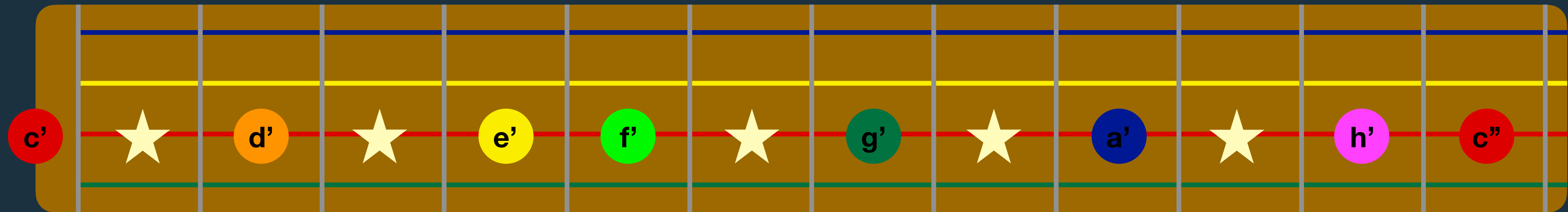
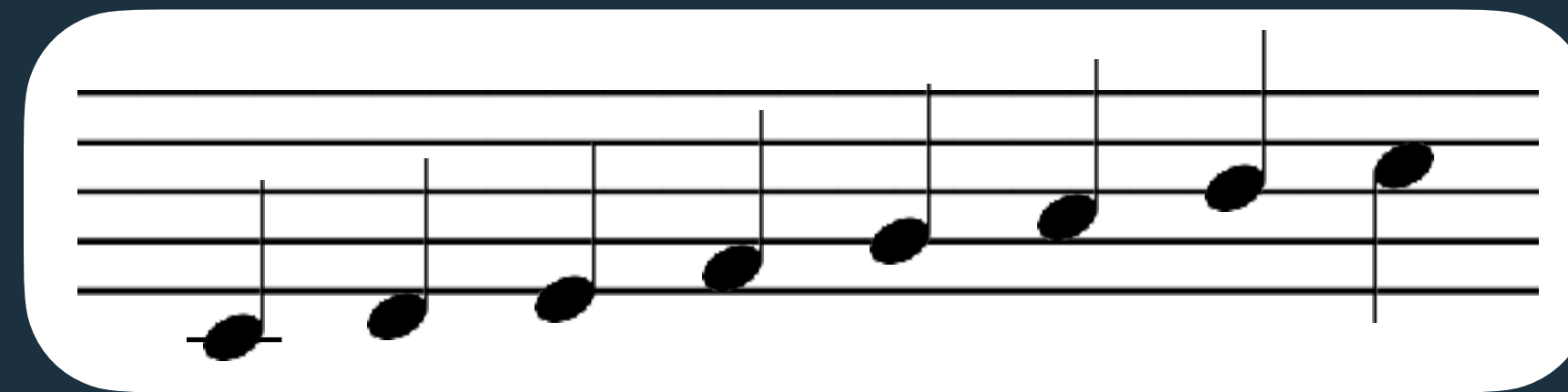
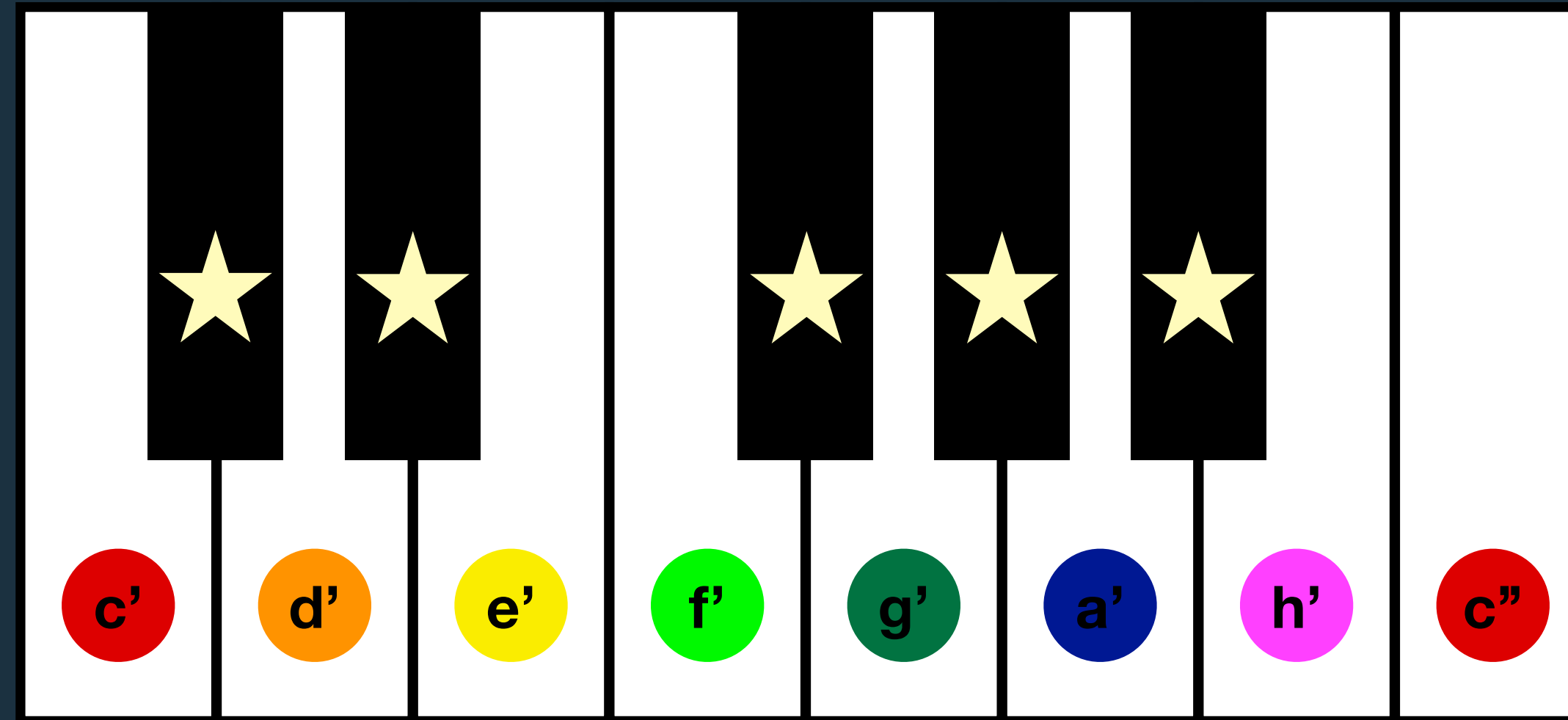


Line/Space	Note
Top Line	h
Second Space	f'
Second Line	d'
Second Space	g'
Other positions	Empty

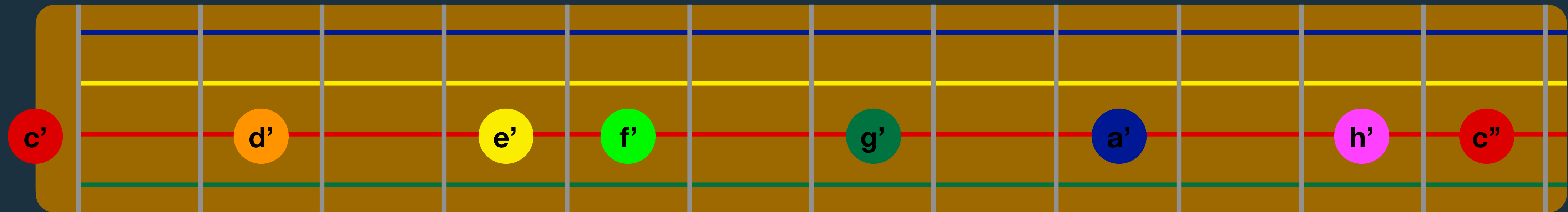
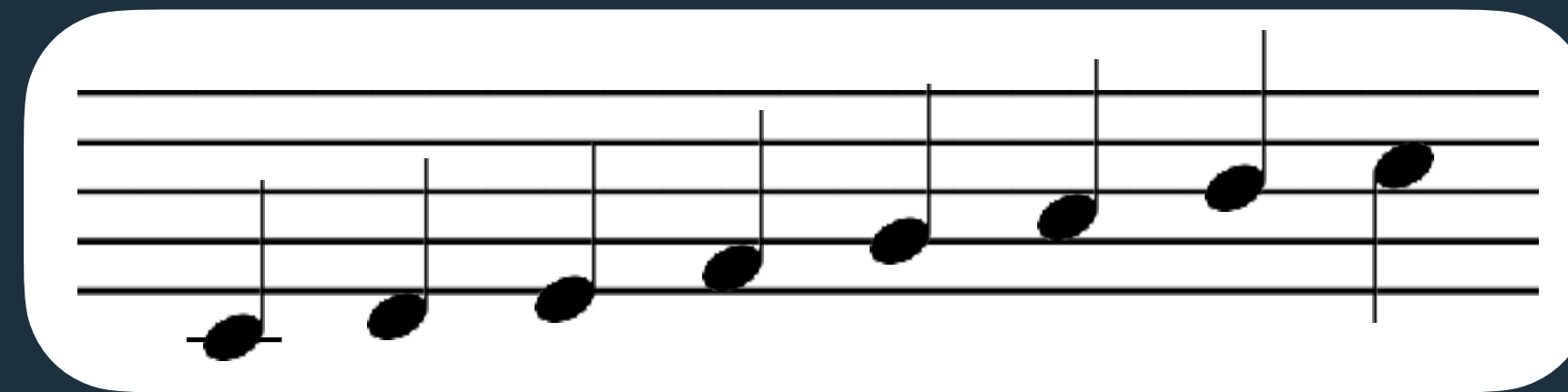
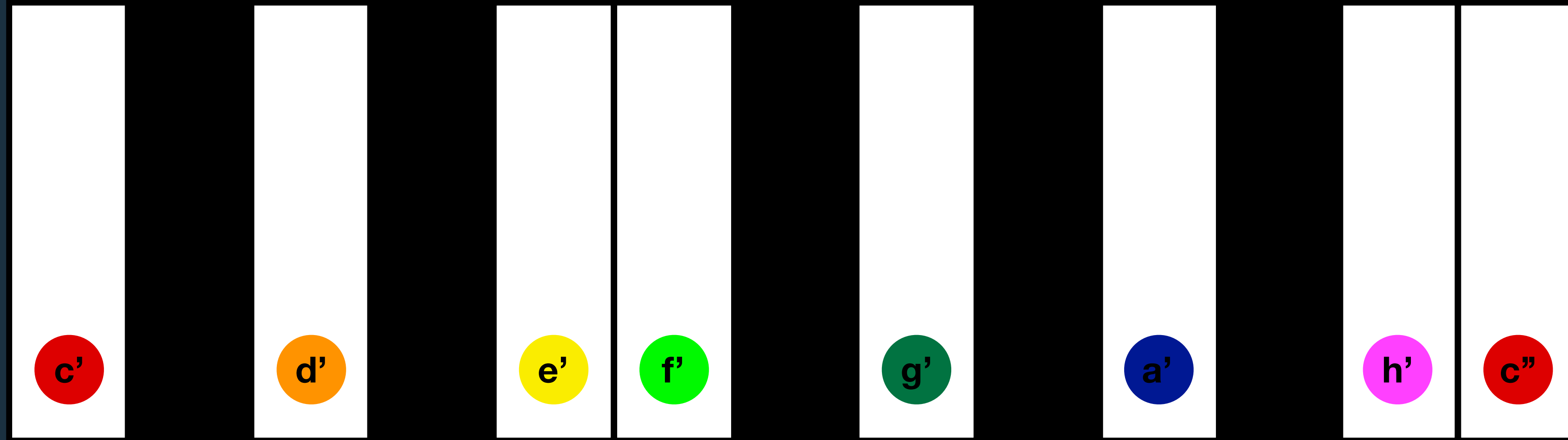




# DAS MIT DEN NAMEN DER TÖNE



# DAS MIT DEN NAMEN DER TÖNE



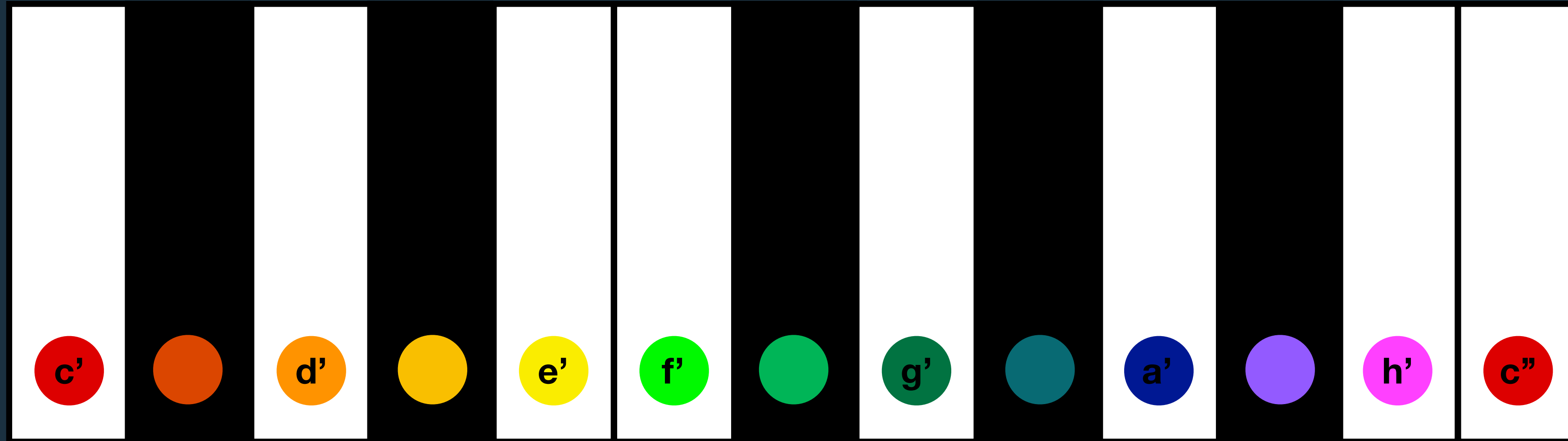
# DAS MIT DEN NAMEN DER TÖNE

A piano keyboard diagram with 13 keys. Below each key is a colored circle with a musical note name. The notes are: c' (red), d' (orange), e' (yellow), f' (green), g' (teal), a' (blue), h' (purple), and c'' (red). The circles are placed on the white keys, with an empty space between the first and second white keys, and between the last two white keys.

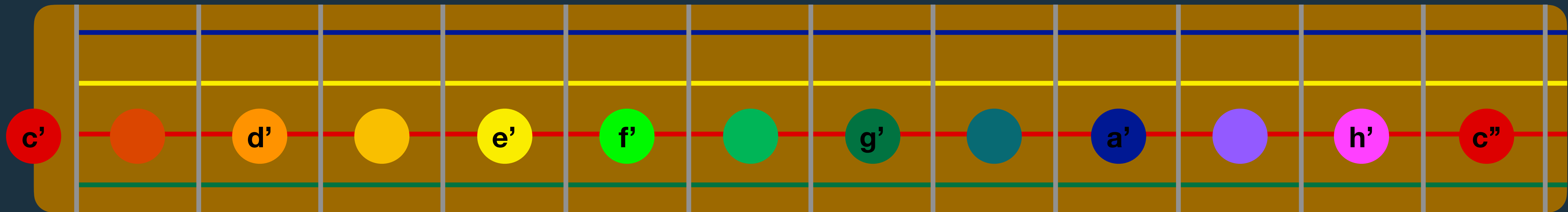
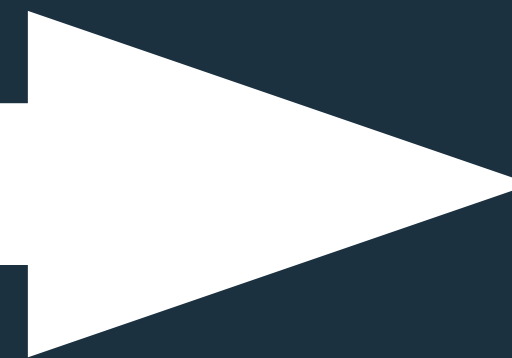
A musical staff with 13 positions. A red line runs through the center of each position. Colored circles with note names are placed on the red line: c' (red), d' (orange), e' (yellow), f' (green), g' (teal), a' (blue), h' (purple), and c'' (red). The circles are placed on the first, third, fifth, seventh, ninth, and eleventh positions.



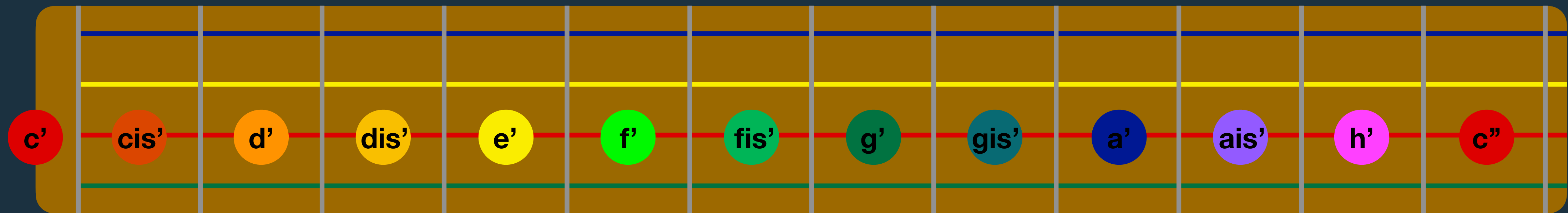
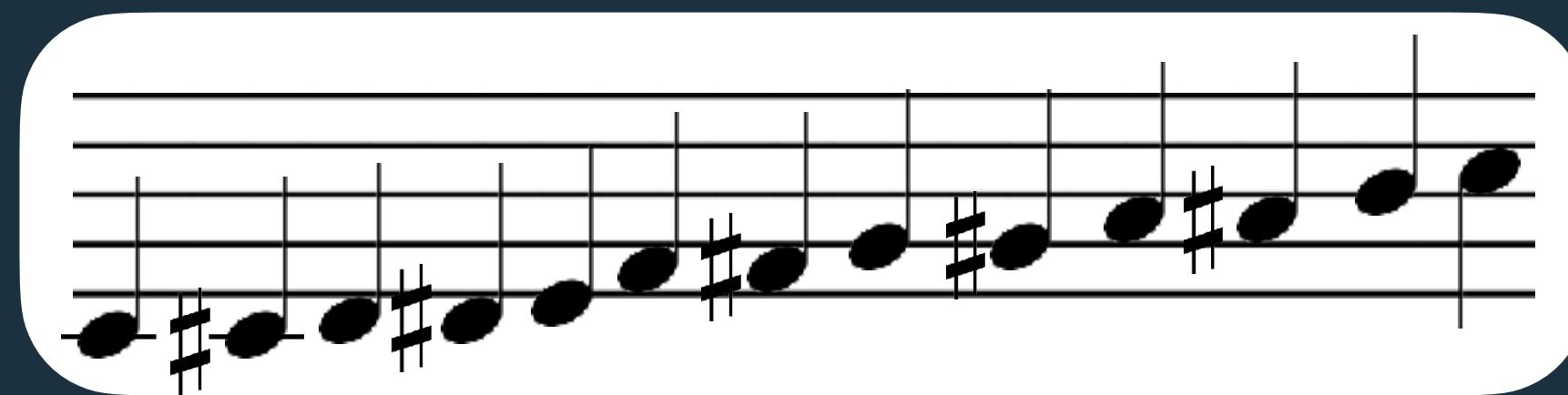
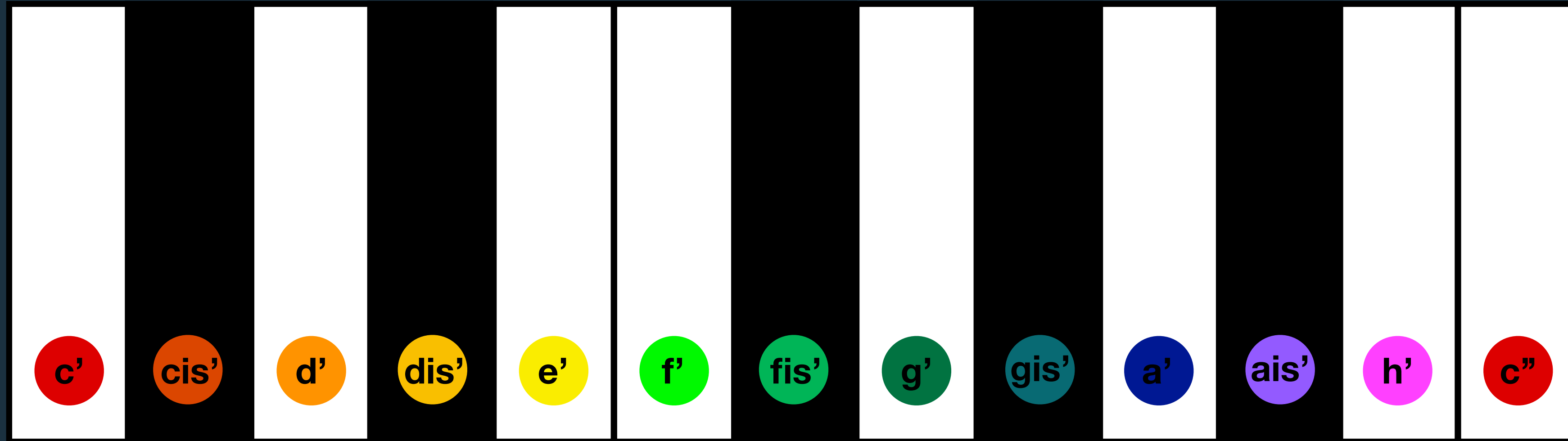
# DAS MIT DEN NAMEN DER TÖNE



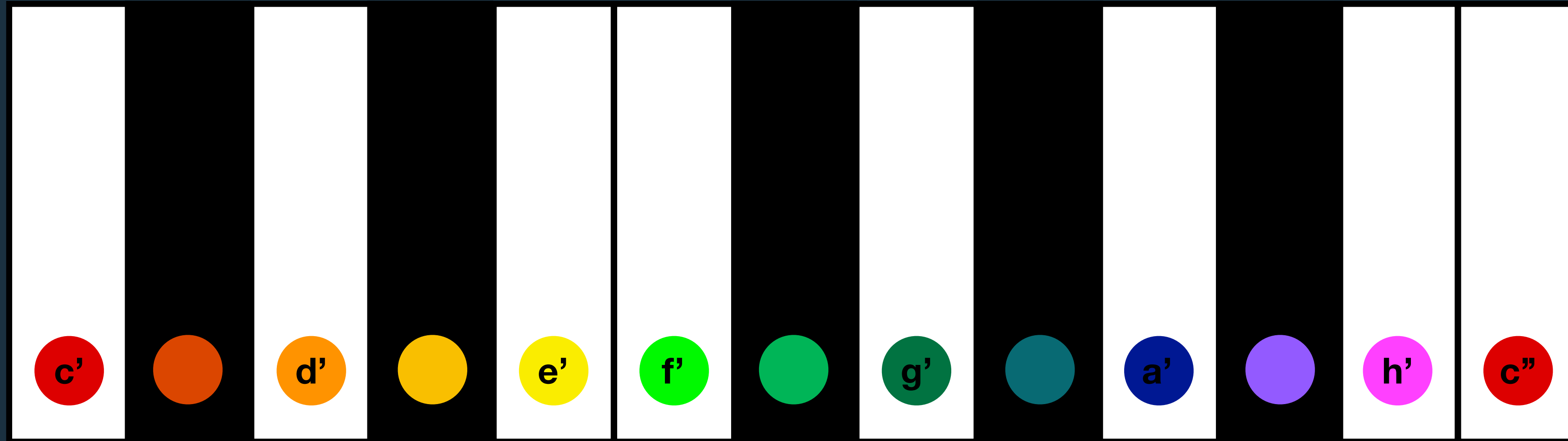
Die Silbe „is“ wird angehängt



# DAS MIT DEN NAMEN DER TÖNE

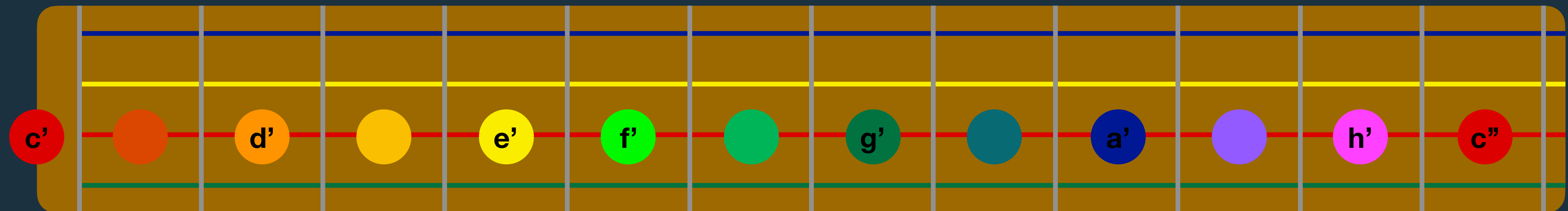


# DAS MIT DEN NAMEN DER TÖNE

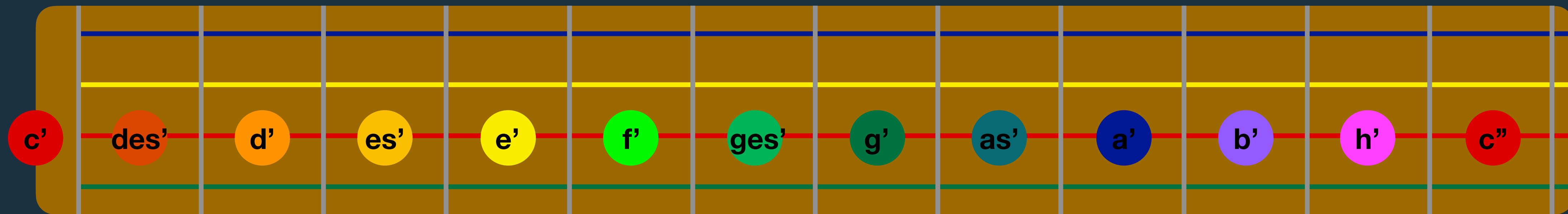
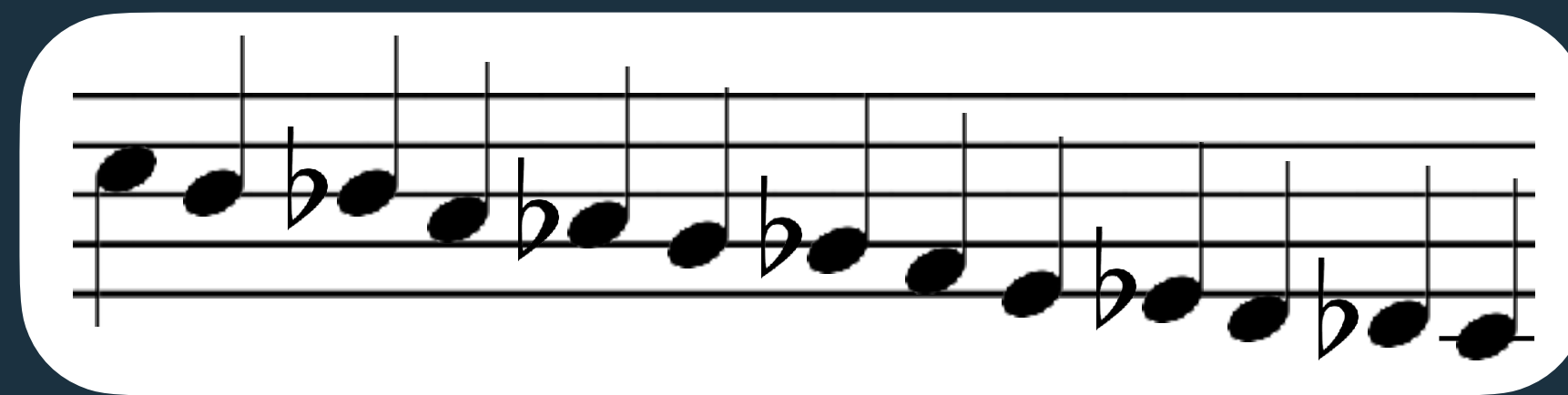
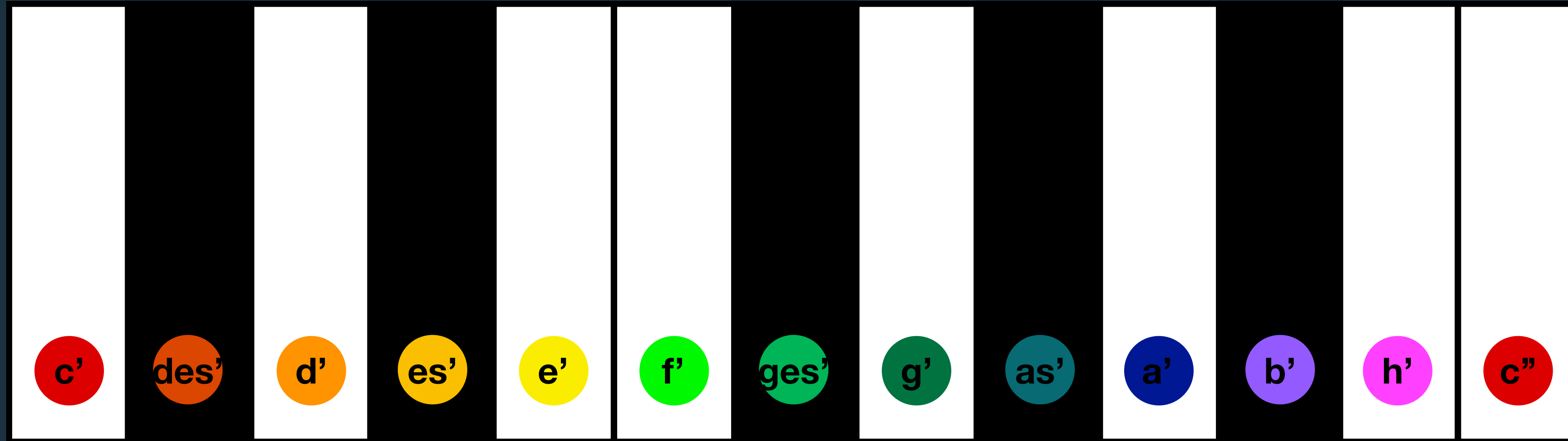


**WIE!**

Die Silbe „es“ wird angehängt

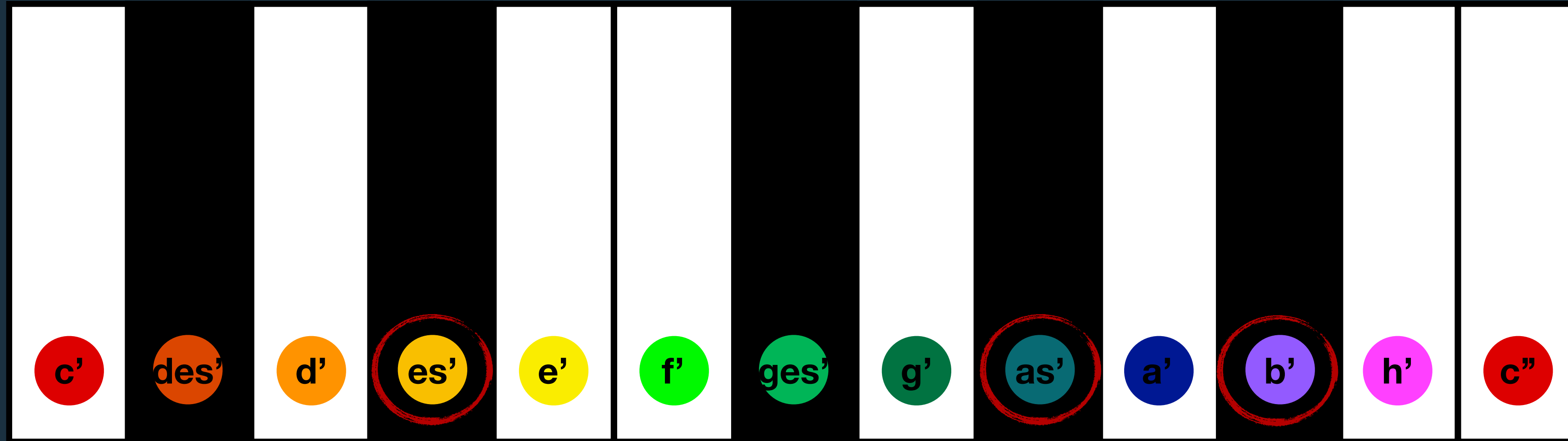


# DAS MIT DEN NAMEN DER TÖNE





# DAS MIT DEN NAMEN DER TÖNE



**ÜBEN!**

